



MATCH Slate

Perfectly integrated photovoltaics



reddot winner
urban design

Solar tile

▼ Single-family house in Bürglen | Sonderpreis Thurgauer Energiepreis 2023

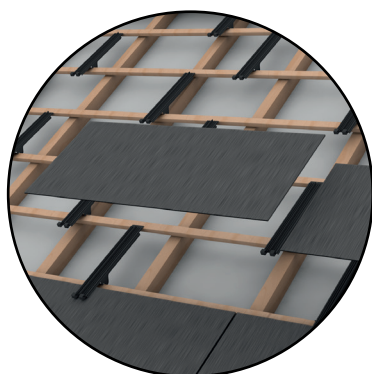


MATCH Slate

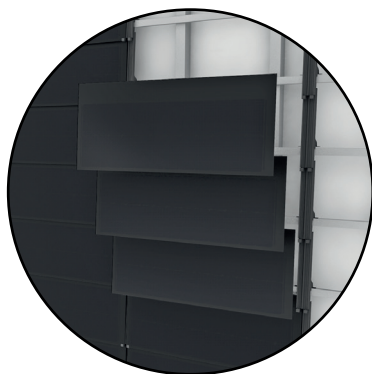
Complete roof covering or in combination with shingle-like roof coverings. Now also suitable for facades.

Areas of application

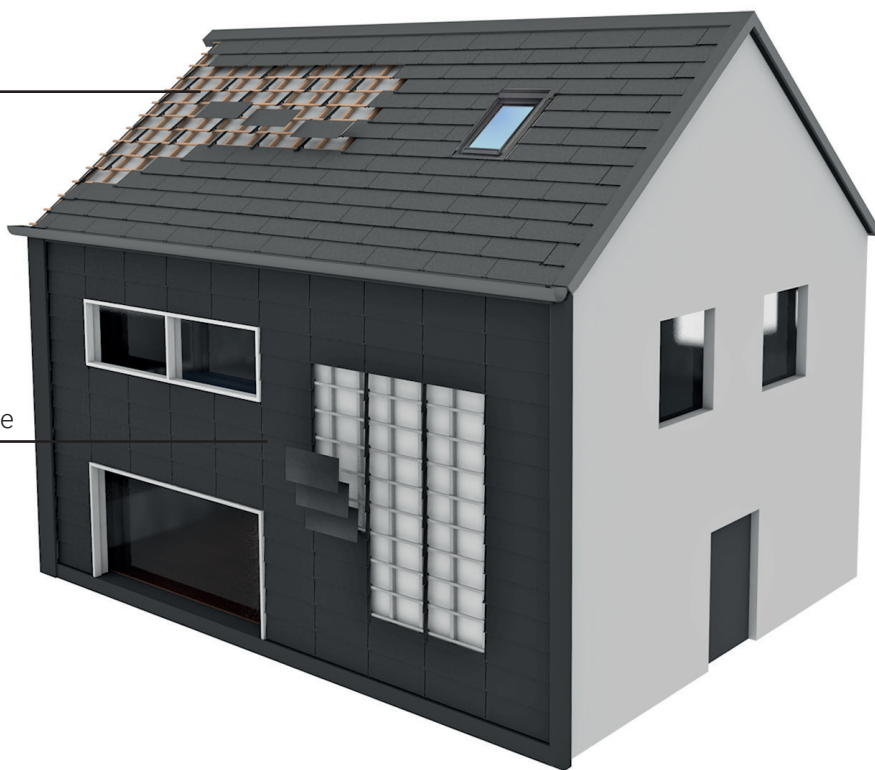
MATCH slate is predestined for solar roofs and solar facades with high aesthetic requirements – especially for projects where the roof design is based on a classic shingle look and/or demanding roof geometries exist.



Solar roof

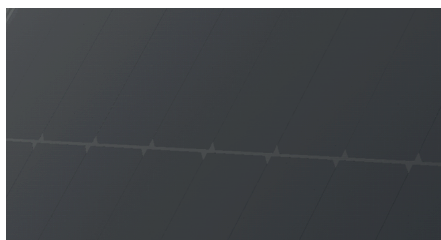


Solar facade

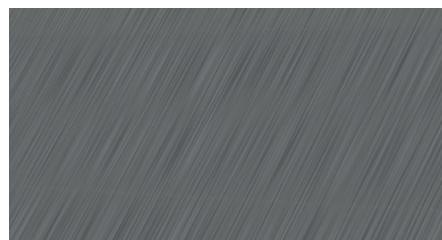


Optics

MATCH Slate is available in the designs Fjord Totally Black and Creek Granite Grey.



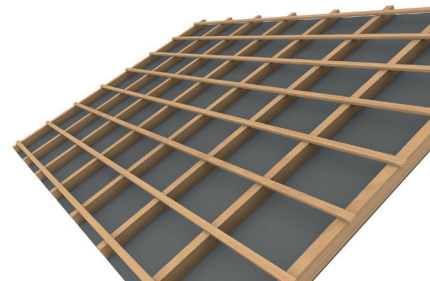
Fjord Totally Black



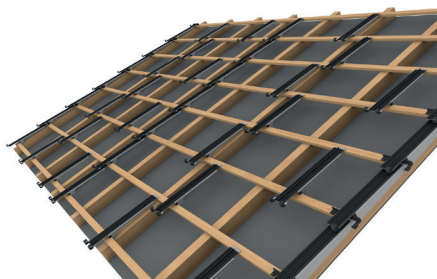
Creek Granite Grey

How it works

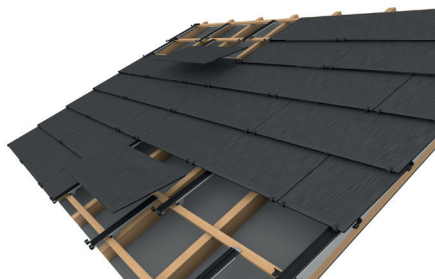
The system is built on a conventional roof battening. The solar modules are fixed to the roof or facade with discreet MATCH hooks and form a seamless transition to the roof edge without the need for on-site metal sheeting work. MATCH Slate can also be perfectly integrated into an existing shingle roof covering (e.g. aluminium composite panels, fibre cement, glass elements, etc.).



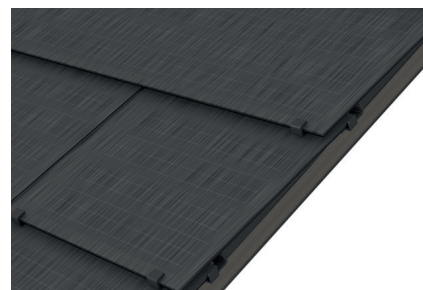
1 Prepare roof battening



2 Install module hooks



3 Insert MATCH Slate modules

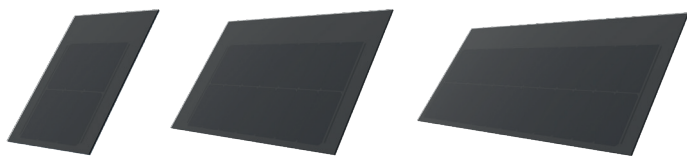


Complete integration without tinsmith work

Flexibility

Three standard formats give the system a high degree of flexibility and enable full-surface integration for all roof and facade geometries. The formats can be combined as desired in different laying types, giving them a distinctive character. Freely cut-to-size and color-coordinated blind panels are available for matching pieces.

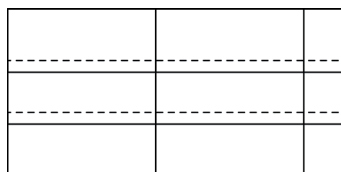
Examples of different module formats



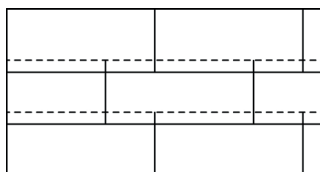
Rastermasse: 362 x 380 mm, 724 x 380 mm, 1086 x 380 mm

Examples of installation layouts

MATCH Slate can be freely combined.



Standard mounting



Offset mounting

Installation type and time

MATCH Slate is used just like classic roof shingles. The installation time is also based on this.

Components

- > MATCH Slate module
- > MATCH Slate hook and stopper
- > *Anchoring device for personnel protection (optional)*
- > *Snow guard (optional)*
- > *Velux Skylight (optional)*

Technical specifications

Solar module type: glass-glass modules

Hail protection: Protection class 5 (hailstone size 50 mm)

Fire safety: The top cover layer and the back side are made of heat-resistant glass. The construction is made of aluminum.

Rear ventilation: by means of wooden slats

SOLARAPP

Configure now free of charge with SOLARAPP:
solarapp.ch



Video and technical documentation:
megasol.ch/en/match/slate



▼ Apartment building in Winterthur



▼ Church in Saas-Fee



▼ Residential house in Savognin

