



MATCH Slate

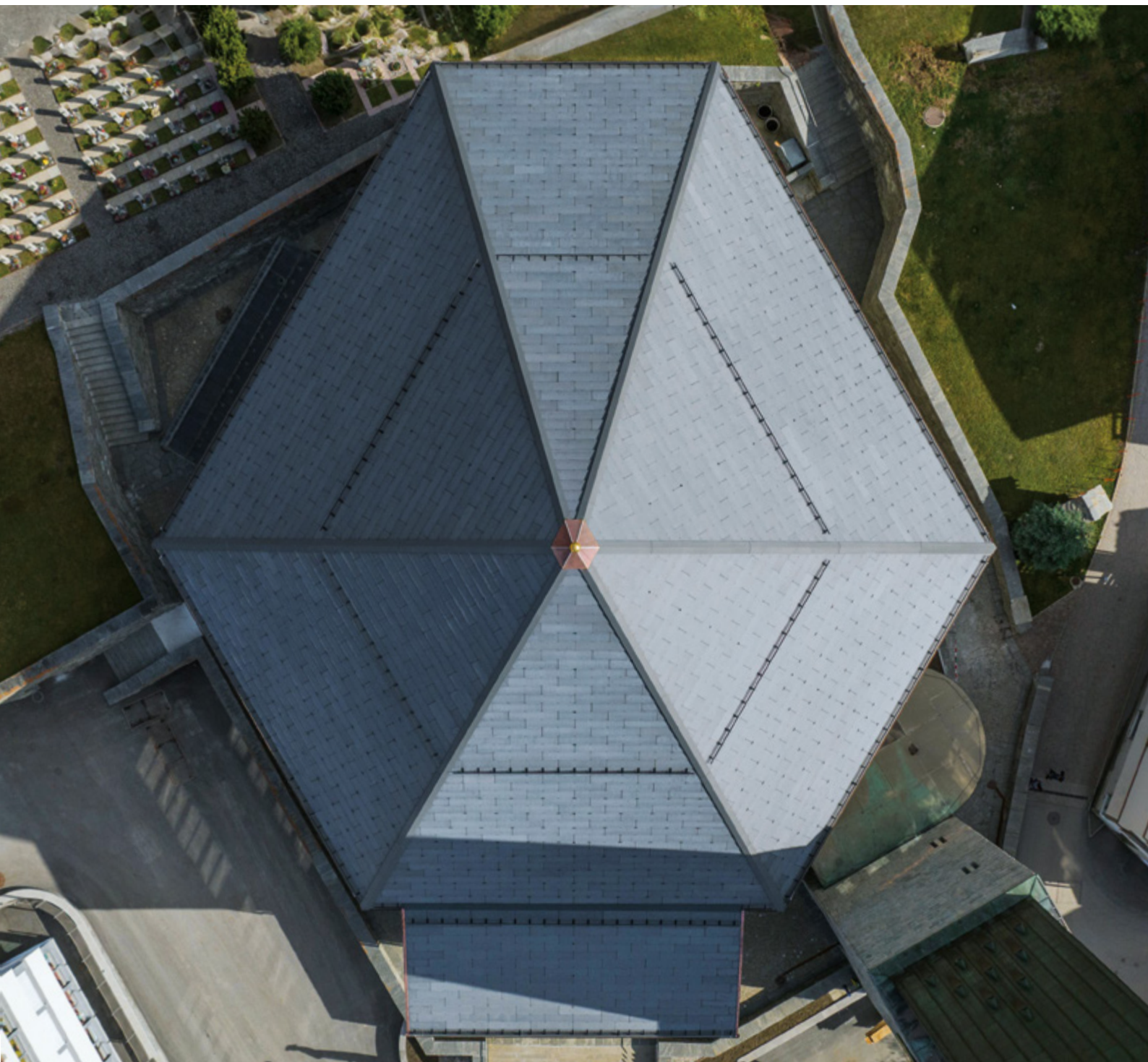
Perfectly integrated photovoltaics



reddot winner
urban design

Solar roof

▼ Church in Saas-Fee

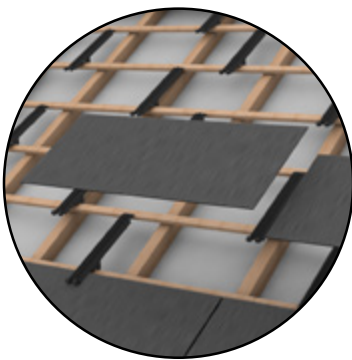


MATCH Slate

Complete roof covering.
Also suitable for facades.

Areas of application

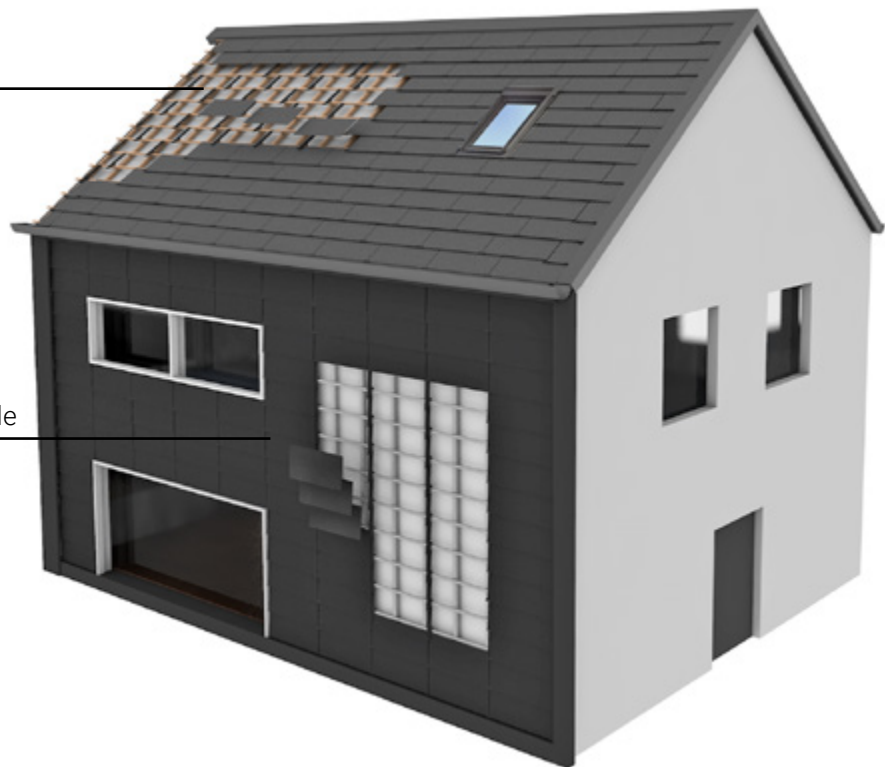
MATCH slate is designed for solar roofs and solar facades with high aesthetic requirements – especially for projects where the roof design is based on a classic shingle look and/or demanding roof geometries exist.



Solar roof

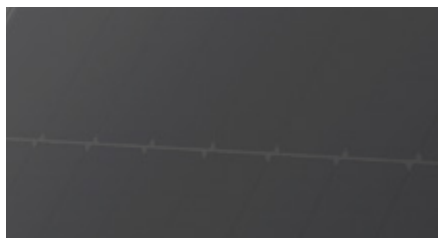


Solar facade

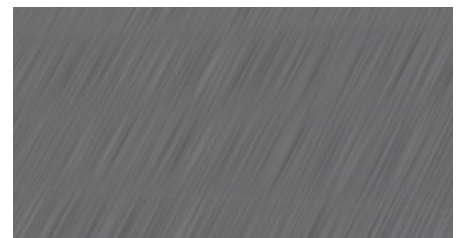


Optics

MATCH Slate is available in the designs Fjord Totally Black and Creek Granite.



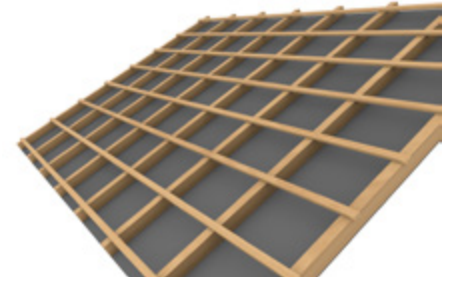
Fjord Totally Black



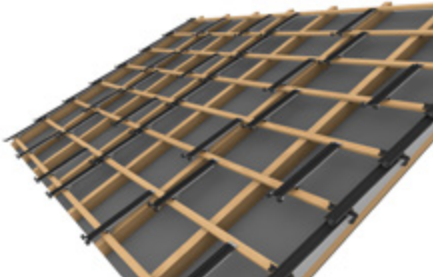
Creek Granite

How it works

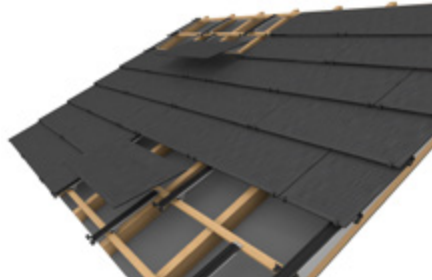
The system is built on a conventional roof battening. The solar modules are fixed to the roof or facade with discreet MATCH hooks and form a seamless transition to the roof edge without the need for on-site metal sheeting work.



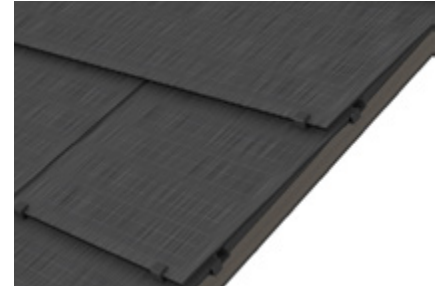
1 Prepare roof battening



2 Install module hooks



3 Insert MATCH Slate modules



Complete integration without tinsmith work

Flexibility

Three standard formats give the system a high-degree of flexibility and enable full-surface integration for all roof and facade geometries. The formats can be combined in different laying types as required. The INSHAPE adaptation panel complements the Creek Granite PV modules. It can be cut to size on site using a jigsaw or similar tool. It impresses with its identical appearance.

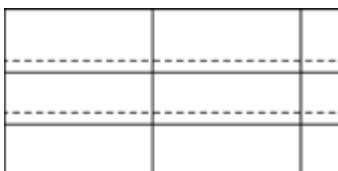
Module formats



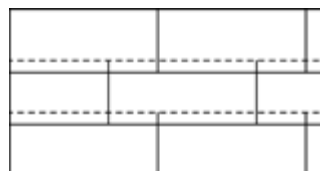
Grid dimensions: 362 x 380 mm, 724 x 380 mm, 1086 x 380 mm

Examples of installation layouts

MATCH Slate can be freely combined.



Standard mounting



Offset mounting

Installation type and time

MATCH Slate is used just like classic roof shingles. The installation time is also based on this.

Components

- > MATCH Slate module
- > MATCH Slate hook and stopper
- > Anchoring device for personnel protection (optional)
- > Snow guard (optional)
- > Velux Skylight (optional)
- > INSHAPE fitting plate (optional - only for Creek Granite)

Technical specifications

Solar module type: glass-glass modules

Hail protection: Protection class 5 (hailstone size 50 mm)

Fire safety: The top cover layer and the back side are made of heat-resistant glass. The construction is made of aluminum.

Rear ventilation: by means of wooden slats

SOLARAPP

Configure now free of charge with SOLARAPP:
solarapp.ch/en/

More info:
megasol.ch/en/match/slate



▼ Single-family house in Weinfelden



Picture: A. Kuster AG

▼ Residential house in Savognin



▼ Residential house in Schmitten

