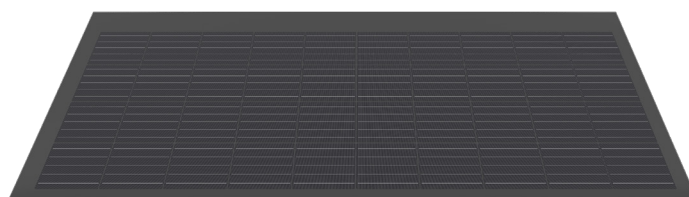


Border solar modules for M330-60-b GG LEVEL

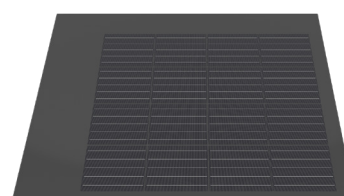
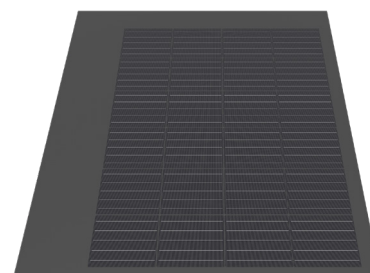
3337.0481 Swiss Premium M220-4x10-b GG LEVEL

Nominal power (Pmpp)	220 Wp
Nominal voltage (Umpp)	22.7 V
Nominal current (Impp)	9.69 A
Open circuit voltage (Uoc)	27.0 V
Short circuit current (Isc)	10.74 A
Number of cells (matrix)	40 (4x 10)
Dimensions (LxWxH) ± 3.0 mm	780 x 1695 x 8 mm
Modular dimensions (LxW)	696 x 1700 mm
Weight	23.1 kg



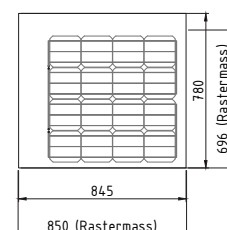
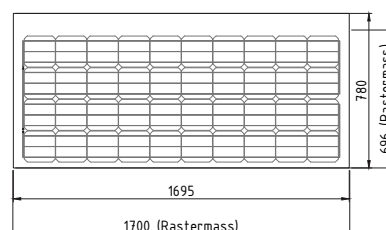
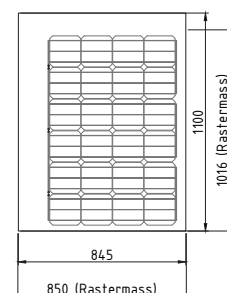
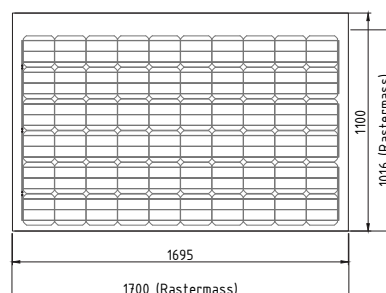
3337.0483 Swiss Premium M132-6x4-b GG LEVEL

Nominal power (Pmpp)	132 Wp
Nominal voltage (Umpp)	13.7 V
Nominal current (Impp)	9.69 A
Open circuit voltage (Uoc)	16.2 V
Short circuit current (Isc)	10.74 A
Number of cells (matrix)	24 (6x 4)
Dimensions (LxWxH) ± 3.0 mm	1100 x 845 x 8 mm
Modular dimensions (LxW)	1016 x 850 mm
Weight	16.3 kg



3337.0485 Swiss Premium M88-4x4-b GG LEVEL

Nominal power (Pmpp)	88 Wp
Nominal voltage (Umpp)	9.1 V
Nominal current (Impp)	9.69 A
Open circuit voltage (Uoc)	10.8 V
Short circuit current (Isc)	10.74 A
Number of cells (matrix)	16 (4x 4)
Dimensions (LxWxH) ± 3.0 mm	780 x 845 x 8 mm
Modular dimensions (LxW)	696 x 850 mm
Weight	11.5 kg



Product variants Junction box on the right (viewed from above)

3337.0482 Swiss Premium M220-4x10-b GG LEVEL Jbox R

3337.0484 Swiss Premium M132-6x4-b GG LEVEL Jbox R

3337.0486 Swiss Premium M88-4x4-b GG LEVEL Jbox R

Customized special modules

3337.0251 Special module LEVEL Cat. 1 active / complexity: low

3337.0248 Special module LEVEL Cat. 2 active / complexity: medium

3337.0249 Special module LEVEL Cat. 3 active / complexity: high

3337.0250 Special module LEVEL Cat. 4 passive / complexity: high

Border modules are electrically compatible with the corresponding basic module (60 solar cells). For technical reasons of production, despite utmost care, the surface properties and optical colour effect may vary from the basic module.

STC (Standard Test Conditions): irradiance 1000 W/m², cell temperature 25°C, AM 1.5
Measuring tolerances ± 3 % (Pmpp); ± 10 % (Umpp, Impp, Uoc, Isc)



Note: The instructions in the installation manual must be strictly complied with. Further information about approved utilization of products can be found in the installation manual or can be requested from the technical service.

E-mail: info@megasol.ch
Hotline: +41 62 919 90 90
www.megasol.ch



Megasol partner

Subject to errors and technical modifications.
© Megasol Energy Ltd | Version: 08/2020