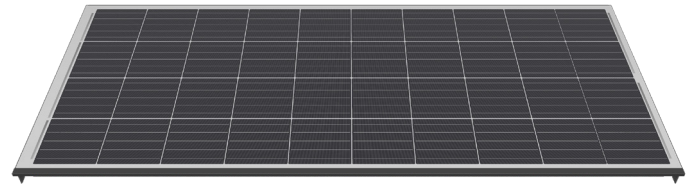


Border solar modules for M330-60-w GF NICER 3

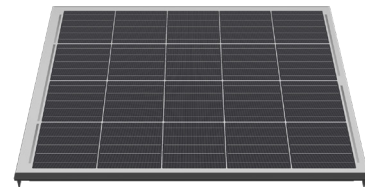
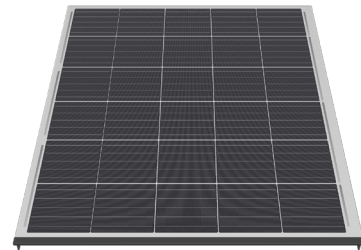
0322.1434 Swiss Premium M220-4x10-w GF NICER 3

| | |
|-----------------------------|----------------|
| Nominal power (Pmpp) | 220 Wp |
| Nominal voltage (Umpp) | 22.7 V |
| Nominal current (Impp) | 9.69 A |
| Open circuit voltage (Uoc) | 27.0 V |
| Short circuit current (Isc) | 10.74 A |
| Number of cells (matrix) | 40 (4x 10) |
| Dimensions (LxWxH) ±3.0 mm | 725x1671x57 mm |
| Modular dimensions (LxW) | 696x1676 mm |
| Weight | 16 kg |



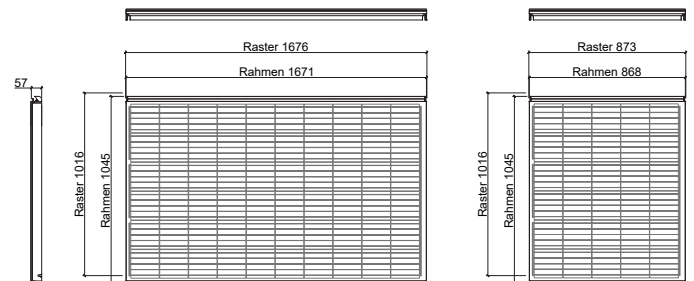
0322.1435 Swiss Premium M165-6x5-w GF NICER 3

| | |
|-----------------------------|----------------|
| Nominal power (Pmpp) | 165 Wp |
| Nominal voltage (Umpp) | 17.1 V |
| Nominal current (Impp) | 9.69 A |
| Open circuit voltage (Uoc) | 20.2 V |
| Short circuit current (Isc) | 10.74 A |
| Number of cells (matrix) | 30 (6x 5) |
| Dimensions (LxWxH) ±3.0 mm | 1045x868x57 mm |
| Modular dimensions (LxW) | 1016x873 mm |
| Weight | 13 kg |



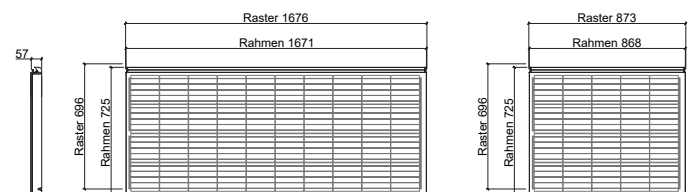
0322.1436 Swiss Premium M110-4x5-w GF NICER 3

| | |
|-----------------------------|---------------|
| Nominal power (Pmpp) | 110 Wp |
| Nominal voltage (Umpp) | 11.4 V |
| Nominal current (Impp) | 9.69 A |
| Open circuit voltage (Uoc) | 13.5 V |
| Short circuit current (Isc) | 10.74 A |
| Number of cells (matrix) | 20 (4x 5) |
| Dimensions (LxWxH) ±3.0 mm | 725x868x57 mm |
| Modular dimensions (LxW) | 696x873 mm |
| Weight | 9.5 kg |



Customized special modules

| | |
|---|-----------------------------|
| 3338.0991 Special module NICER 2/3 Cat. 1 | active / complexity: low |
| 3338.0992 Special module NICER 2/3 Cat. 2 | active / complexity: medium |
| 3338.0993 Special module NICER 2/3 Cat. 3 | active / complexity: high |
| 3338.0994 Special module NICER 2/3 Cat. 4 | passive / complexity: high |



E-mail: info@megasol.ch
 Hotline: +41 62 919 90 90
www.megasol.ch



Border modules are electrically compatible with the corresponding basic module (60 solar cells). For technical reasons of production, despite utmost care, the surface properties and optical colour effect may vary from the basic module.

STC (Standard Test Conditions): irradiance 1000 W/m², cell temperature 25°C, AM 1.5
 Measuring tolerances ±3 % (Pmpp); ±10 % (Umpp, Impp, Uoc, Isc)



Note: The instructions in the installation manual must be strictly complied with. Further information about approved utilization of products can be found in the installation manual or can be requested from the technical service.

Megasol partner

Subject to errors and technical modifications.
 © Megasol Energy Ltd | Version: 12/2019