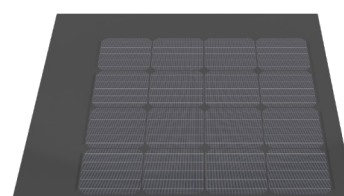
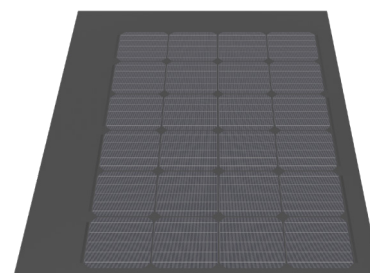
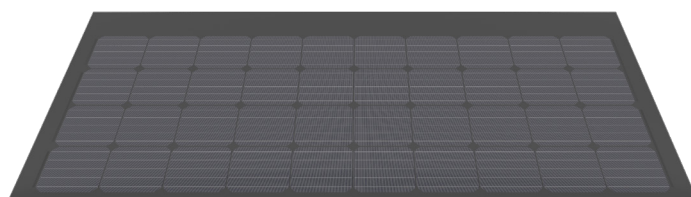


Border solar modules for M310-60-b GG LEVEL

3337.0405 Swiss Premium M207-4x10-b GG LEVEL

Nominal power (Pmpp)	207 Wp
Nominal voltage (Umpp)	21.9 V
Nominal current (Impp)	9.47 A
Open circuit voltage (Uoc)	26.1 V
Short circuit current (Isc)	9.81 A
Number of cells (matrix)	40 (4x 10)
Dimensions (LxWxH) ±3.0 mm	780x1695x8 mm
Modular dimensions (LxW)	696x1700 mm
Weight	23.1 kg

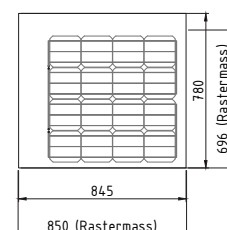
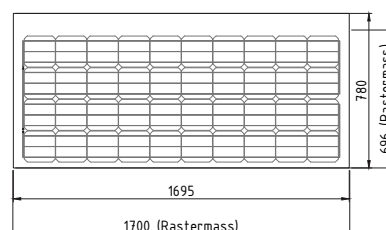
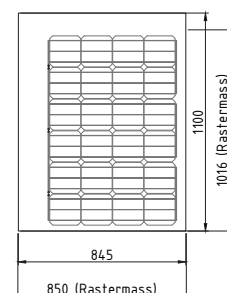
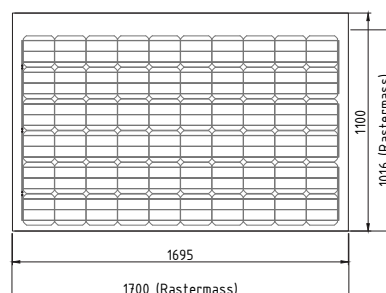


3337.0409 Swiss Premium M124-6x4-b GG LEVEL

Nominal power (Pmpp)	124 Wp
Nominal voltage (Umpp)	13.1 V
Nominal current (Impp)	9.47 A
Open circuit voltage (Uoc)	15.6 V
Short circuit current (Isc)	9.81 A
Number of cells (matrix)	24 (6x 4)
Dimensions (LxWxH) ±3.0 mm	1100x845x8 mm
Modular dimensions (LxW)	1016x850 mm
Weight	16.3 kg

3337.0413 Swiss Premium M83-4x4-b GG LEVEL

Nominal power (Pmpp)	83 Wp
Nominal voltage (Umpp)	8.8 V
Nominal current (Impp)	9.47 A
Open circuit voltage (Uoc)	10.5 V
Short circuit current (Isc)	9.81 A
Number of cells (matrix)	16 (4x 4)
Dimensions (LxWxH) ±3.0 mm	780x845x8 mm
Modular dimensions (LxW)	696x850 mm
Weight	11.5 kg



Product variants Junction box on the right (viewed from above)

3337.0275 Swiss Premium M207-4x10-b GG LEVEL Jbox R

3337.0279 Swiss Premium M124-6x4-b GG LEVEL Jbox R

3337.0283 Swiss Premium M83-4x4-b GG LEVEL Jbox R

Customized special modules

3337.0251 Special module LEVEL Cat. 1 active / complexity: low

3337.0248 Special module LEVEL Cat. 2 active / complexity: medium

3337.0249 Special module LEVEL Cat. 3 active / complexity: high

3337.0250 Special module LEVEL Cat. 4 passive / complexity: high

Border modules are electrically compatible with the corresponding basic module (60 solar cells). For technical reasons of production, despite utmost care, the surface properties and optical colour effect may vary from the basic module.

STC (Standard Test Conditions): irradiance 1000 W/m², cell temperature 25°C, AM 1.5
Measuring tolerances ±3 % (Pmpp); ±10 % (Umpp, Impp, Uoc, Isc)



Note: The instructions in the installation manual must be strictly complied with. Further information about approved utilization of products can be found in the installation manual or can be requested from the technical service.

E-mail: info@megasol.ch
Hotline: +41 62 919 90 90
www.megasol.ch



Megasol partner

Subject to errors and technical modifications.
© Megasol Energy Ltd | Version: 03/2019