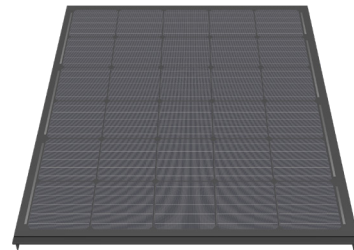


## Border solar modules for M310-60-b GF NICER 2

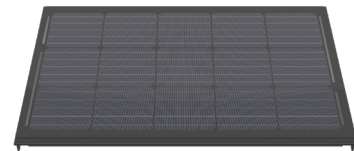
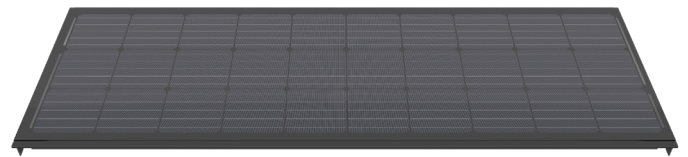
### 3338.0887 Swiss Premium M155-6x5-b GF NICER 2

|                             |                |
|-----------------------------|----------------|
| Nominal power (Pmpp)        | 155 Wp         |
| Nominal voltage (Umpp)      | 16.4 V         |
| Nominal current (Impp)      | 9.47 A         |
| Open circuit voltage (Uoc)  | 19.5 V         |
| Short circuit current (Isc) | 9.81 A         |
| Number of cells (matrix)    | 30 (6x 5)      |
| Dimensions (LxWxH) ± 3.0 mm | 1045x858x57 mm |
| Modular dimensions (LxW)    | 1016x863 mm    |
| Weight                      | 12.5 kg        |



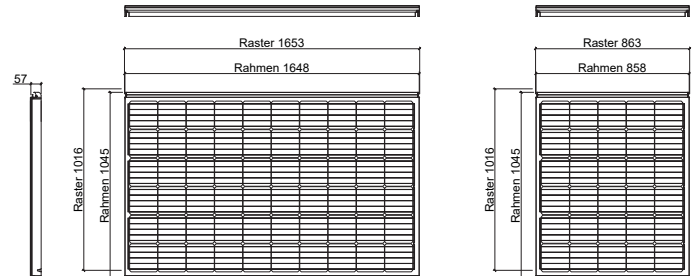
### 3338.0886 Swiss Premium M155-3x10-b GF NICER 2

|                             |                |
|-----------------------------|----------------|
| Nominal power (Pmpp)        | 155 Wp         |
| Nominal voltage (Umpp)      | 16.4 V         |
| Nominal current (Impp)      | 9.47 A         |
| Open circuit voltage (Uoc)  | 19.5 V         |
| Short circuit current (Isc) | 9.81 A         |
| Number of cells (matrix)    | 30 (3x 10)     |
| Dimensions (LxWxH) ± 3.0 mm | 577x1648x57 mm |
| Modular dimensions (LxW)    | 548x1653 mm    |
| Weight                      | 13.5 kg        |



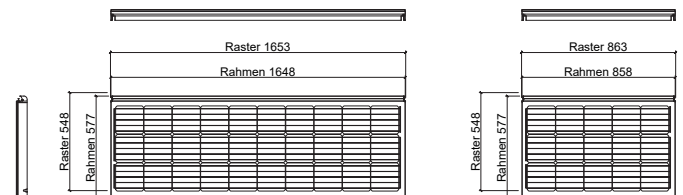
### 3338.0888 Swiss Premium M77-3x5-b GF NICER 2

|                             |                |
|-----------------------------|----------------|
| Nominal power (Pmpp)        | 77 Wp          |
| Nominal voltage (Umpp)      | 8.2 V          |
| Nominal current (Impp)      | 9.47 A         |
| Open circuit voltage (Uoc)  | 9.7 V          |
| Short circuit current (Isc) | 9.81 A         |
| Number of cells (matrix)    | 15 (3x 5)      |
| Dimensions (LxWxH) ± 3.0 mm | 577x858x 57 mm |
| Modular dimensions (LxW)    | 548x863 mm     |
| Weight                      | 8 kg           |



### Customized special modules

|                                       |                             |
|---------------------------------------|-----------------------------|
| 3338.0991 Special module NICER Cat. 1 | active / complexity: low    |
| 3338.0992 Special module NICER Cat. 2 | active / complexity: medium |
| 3338.0993 Special module NICER Cat. 3 | active / complexity: high   |
| 3338.0994 Special module NICER Cat. 4 | passive / complexity: high  |



E-mail: [info@megasol.ch](mailto:info@megasol.ch)  
 Hotline: +41 62 919 90 90  
[www.megasol.ch](http://www.megasol.ch)



Border modules are electrically compatible with the corresponding basic module (60 solar cells).  
 For technical reasons of production, despite utmost care, the surface properties and optical colour effect may vary from the basic module.

STC (Standard Test Conditions): irradiance 1000 W/m<sup>2</sup>, cell temperature 25°C, AM 1.5  
 Measuring tolerances ± 3 % (Pmpp); ± 10 % (Umpp, Impp, Uoc, Isc)



**Note:** The instructions in the installation manual must be strictly complied with. Further information about approved utilization of products can be found in the installation manual or can be requested from the technical service.

Megasol partner

Subject to errors and technical modifications.  
 © Megasol Energy Ltd | Version: 03/2019