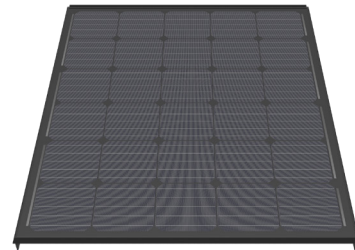


Border solar modules for M310-60-b GF NICER

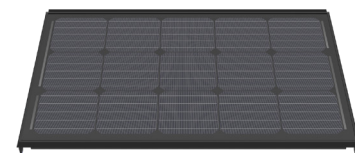
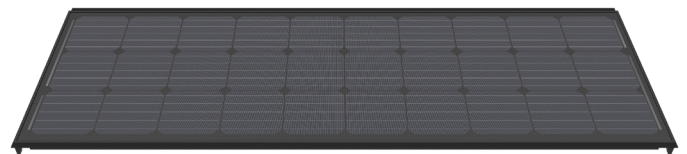
0322.1311 Swiss Premium M155-6x5-b GF NICER

| | |
|-----------------------------|----------------|
| Nominal power (Pmpp) | 155 Wp |
| Nominal voltage (Umpp) | 16.4 V |
| Nominal current (Impp) | 9.47 A |
| Open circuit voltage (Uoc) | 19.5 V |
| Short circuit current (Isc) | 9.81 A |
| Number of cells (matrix) | 30 (6x 5) |
| Dimensions (LxWxH) ±3.0 mm | 1041x858x51 mm |
| Modular dimensions (LxW) | 1016x863 mm |
| Weight | 12.6 kg |



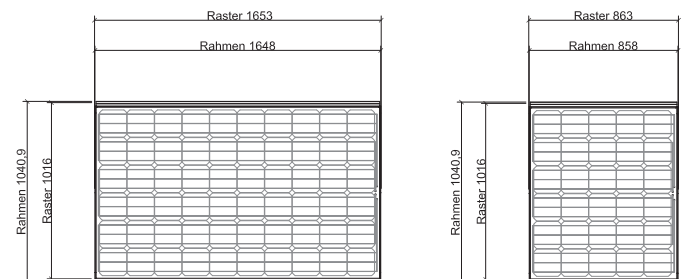
0322.1307 Swiss Premium M155-3x10-b GF NICER

| | |
|-----------------------------|----------------|
| Nominal power (Pmpp) | 155 Wp |
| Nominal voltage (Umpp) | 16.4 V |
| Nominal current (Impp) | 9.47 A |
| Open circuit voltage (Uoc) | 19.5 V |
| Short circuit current (Isc) | 9.81 A |
| Number of cells (matrix) | 30 (3x 10) |
| Dimensions (LxWxH) ±3.0 mm | 573x1648x51 mm |
| Modular dimensions (LxW) | 548x1653 mm |
| Weight | 14 kg |



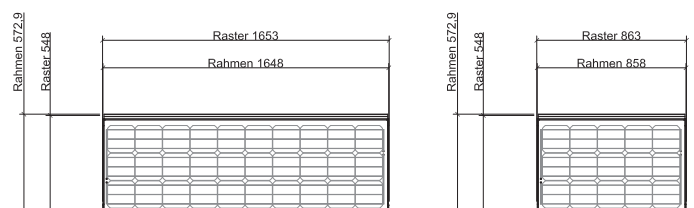
0322.1315 Swiss Premium M77-3x5-b GF NICER

| | |
|-----------------------------|---------------|
| Nominal power (Pmpp) | 77 Wp |
| Nominal voltage (Umpp) | 8.2 V |
| Nominal current (Impp) | 9.47 A |
| Open circuit voltage (Uoc) | 9.7 V |
| Short circuit current (Isc) | 9.81 A |
| Number of cells (matrix) | 15 (3x 5) |
| Dimensions (LxWxH) ±3.0 mm | 573x858x51 mm |
| Modular dimensions (LxW) | 548x863 mm |
| Weight | 9.7 kg |



3338.0346 Special module NICER with cells

Customized production with electrically active solar cells
Shape and size differs from standard. Production according to customer requirement.



E-mail: info@megasol.ch
Hotline: +41 62 919 90 90
www.megasol.ch



Border modules are electrically compatible with the corresponding basic module (60 solar cells).
For technical reasons of production, despite utmost care, the surface properties and optical colour effect may vary from the basic module.

STC (Standard Test Conditions): irradiance 1000 W/m², cell temperature 25°C, AM 1.5
Measuring tolerances ±3 % (Pmpp); ±10 % (Umpp, Impp, Uoc, Isc)



Note: The instructions in the installation manual must be strictly complied with. Further information about approved utilization of products can be found in the installation manual or can be requested from the technical service.

Megasol partner

Subject to errors and technical modifications.
© Megasol Energy Ltd | Version: 07/2018